

CURRENT OFFICERS:

President:

Sarah Crew (561-620-2856)

crewhawken@aol.com

Vice President:

Dolly O'Shea (561-391-9368)

DollyOShea@comcast.net

Treasurer:

Lee Hasse(561-392-6866)

lmhasse@hotmail.com

Membership Director:

Ellen Heckler (561-245-8280)

Ellen.Heckler@gmail.com

Program Director:

Diane Provost (561-409-3114)

paquinprovost@gmail.com

Publication Director:

Deb Shoemaker

(954-629-1720)

DebShoemaker22@gmail.com

ZENTANGLE TRUNK SHOW WITH DEBBIE PERDUE



ANNUAL MEMBERSHIP DUES

QGbtS annual membership dues for 2014 remain **\$30.00**.

'MEMBERSHIP HAS ITS PRIVILEGES'

Paid members of the QGbtS are eligible to:

- participate in Guild programs
- participate in workshops at a reduced rate
- receive monthly newsletter
- place ads in the classifieds.

Guests are welcome to attend our meetings with a donation of \$5.00 per month twice during a year. Dues are non-refundable.

For information, contact Ellen Heckler.

MEMBERSHIP DIRECTORY

Please submit any changes, additions or deletions to the on-line membership directory.

Changes should be sent to Ellen Heckler via email:

Ellen.Heckler@gmail.com

TREASURER'S REPORT

Balance 2/28/2014	\$5,848
Income	\$ 710
Expenses	\$2,293
Balance 3/31/2014	\$4,265

Submitted by Lee Hasse,
Treasurer



ZENTANGLE WORKSHOP



"ATTIC WINDOW" Workshop



"ATTIC WINDOW" Workshop



TEA TOWELS

Ladies,

Do you have antique tea towels?

Bring them with you to the May Guild meeting.

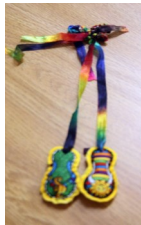
and

Don't forget to bring your decorated Tea Towels to show off! The "Best" in show will be awarded a prize.



IS SOMEONE WEARING A FLIP FLOP PIN?

If someone at the Guild meeting is wearing a quilted flip flop pin, introduce yourself and give them a warm welcome. New members will wear these cute pins to identify themselves to other members.



WELCOME TO OUR NEW MEMBERS:

Pat Conte
Mirrel Jacobs

IT'S A BEE!!!



Information submitted by
Kathy Radosh.

Central Boca Bee

1st and 3rd Friday, April 18,
May 2, May 16 and May 30;
10:00 AM-3:00PM of the
month at Lincolnwood Club-
house.

South Guild (Snowbird Bee)

Snowbirds are flying North for
the summer. See you in the
fall.

Applique Bee

Membership is closed at this
time.

KUDOS KORNER

- Thank you to Diane Provost, Lee Hasse, and Kenny Lunsford for an outstanding job planning and organizing the "Downton Abbey" Party. Participants had a super time.
- Thank you to those members that have made Comfort Bears.

QUILTS OF VALOR

- Thank you to Diane Provost and Letty Covar for presenting a QOV quilt to Sergeant Gordon Telesford (see page 7).
- Keep the Quilts of Valor blocks coming.
- We can always use Red, White, and Blue fabrics. Finished blocks are always welcome. Please bring your donations to any meeting.
- Upcoming Workshops held at Grace Community Church, Del Rio Room, 9:30 AM—3:00 PM; April 15, May 20, and June 25, 2014. Your participation in this program is appreciated by our soldiers.



RED DOOR PROJECT UPDATE

- We continue to have an overwhelming response to the Red Door Project. We've had several more donations of fabric, quilt tops, blocks and batting.
- Volunteers are needed to make the next delivery of quilts to Gilda's Club. Anyone willing to participate, please see Karen Pugh and Janet Eckerd.

Join us for upcoming Red Door Workshops at Grace Community Church, El Rio Room on April 23, May 28, and June 26, 2014.

There is something to do for everyone!



QOV QUILT PRESENTATION

Letty Covar and Diane Provost delivered a QOV quilt to a deserving veteran in West Palm Beach after a request was received from his friend in New York through the QOV Federation.

This is the letter that accompanied the quilt:

March 20, 2014

Dear Sergeant Gordon Telesford,

Please accept this Quilt of Valor as an expression of gratitude for your commitment to our great country. The quilt was made with care by volunteers of the Quilt Guild by the Sea in Boca Raton, Florida. We all have different reasons to volunteer for this project. My dear husband Jim, a combat wounded Viet Nam Vet is my reason. My desire is to assure the men and women who have sacrificed and fought for us that they are appreciated.

Forgive us for being decades late in welcoming you home and sincerely thanking you for your distinguished service. May you have good health and happiness in the future. And may this quilt provide you with comfort and warmth.

Very Truly Yours,

Letty Covar



EVENT CALENDAR:

April 8, 2014

Quilt Guild Meeting:

- Fat Quarter: Reproduction Fabrics

April 15, 2014

- QOV Workshop

April 23, 2014

- Red Door Workshop

May 13, 2014

Quilt Guild Meeting

- Tea Towels
- Fat Quarter: Kitchen Fabrics

May 14, 2014

- Using Tumbler Template Workshop by Linda Adamcik

May 20, 2014

- QOV Workshop

May 28, 2014

- Red Door Workshop

June 10, 2014

Quilt Guild Meeting

- Sue Tharp Trunk Show
- Fat Quarter: Jewel Tones

June 11, 2014

- Jewel Box Quilt Workshop by Sue Tharp

June 17, 2014

- QOV Workshop

June 25, 2014

- Red Door Workshop

Using Tumbler Template Workshop by Linda Adamcik

Date: May 14, 2014

Location: Grace Community Church, El Rio Room

Time: 10:00 AM—3:00 PM

Fee: \$30.00 members, \$35.00 non-members



Jewel Box Quilt Workshop by Sue Tharp

Date: June 11, 2014

Location: Grace Community Church, El Rio Room

Time: 10:00 AM—3:00 PM

Fee: \$35.00 (members), \$40.00 (non-members)

Workshop Refund Policy: Workshop fees are refundable up to **5 days** prior to scheduled date.

EVENT CALENDAR:

July 8, 2014

Quilt Guild Meeting

- Big Bee
- Fat Quarter: Patriotic

August 12, 2012

Quilt Guild Meeting

- Presentation of challenge
- Fat Quarter: Fall

September 9, 2014

Quilt Guild Meeting

- Back-to-School
- Fat Quarter: Holiday

September 10, 2014

- Linda Adamcik will present a workshop

October 14, 2014

Quilt Guild Meeting

- International Quilts
- Fat Quarter: Asian

November 11, 2014

Quilt Guild Meeting

- Build-A-Quilt Presentations
- Guild elections

December 9, 2014

Quilt Guild Meeting

- Holiday Party

ANNOUNCING 2014 MANCUSO QUILT CHALLENGE

Janet Eckerd has graciously agrees head up the 2014 Mancuso Challenge for our Guild. The challenge topic was revealed at the general meeting. Challenge Guidelines are as follows:

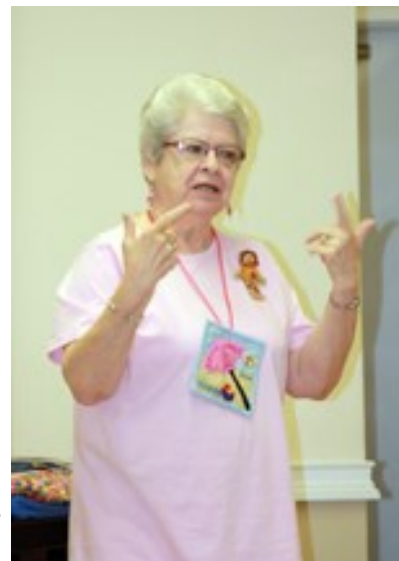
Theme: A Dream Vacation/Dream Trip/ Places I've Been

Quilt Method: Machine or hand pieced, machine or hand quilted

Hanging: 4" sleeve required

Size: Any size

Date Due: August, 2014 Guild Meeting



to

Last year members of our guild had some lovely entries. Participation is welcome for everyone at all skill levels. Need help? Ask a guild member...

For further information, contact: **Janet Eckerd** 561-870-7023

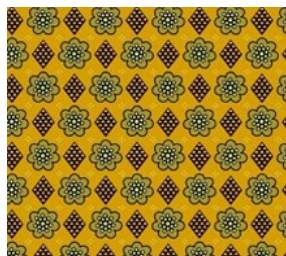
VOLUNTEERS NEEDED

Volunteers are needed for the November Election Nominating Committee. Please see Dolly O'Shea for additional information.

POLICY UPDATE FOR GUILD MEETINGS:

- Members may take pictures during the guild meeting or presentation from their seats. Only the guild photographer may stand to take photograph; this will prevent members from blocking other members views by standing up.
- Cell phones should be turned off or set to vibrate.

FAT QUARTER OF THE MONTH: CIVIL WAR MELODIES



This is a Civil War Reproduction fabric with medallions on a cheddar background by Judie Rothermel, Marcus Fabrics.

FAT QUARTER OF THE MONTH DRAWING

WINNER:

Melinda Schwartz

QUILT PRESENTATION TO GRACE COMMUNITY CHURCH

Grace Community Church received a beautiful donation quilt made by Diane Provost. Thank you Diane.



DONATION OF RED, BLACK AND WHITE FABRIC

Margie Shiner is collecting red, black and white fabric to create a quilt for the Gilda's Club living room.

This quilt will have a permanent home at Gilda's Club.

ORPHAN BLOCKS

Do you have blocks you made in workshops, or started a quilt only to discover after a making a few blocks that you really don't like it? Then, you put these blocks on a shelf or in a drawer to maybe work on at a later date, never to touch them again. They are too good to throw away, but you will never use them...

Well, now perhaps the guild can help you out. We have established an "**Orphan Block**" program, chaired by Karen Pugh. She will have a table at the guild meeting to collect these blocks.

We shall see wondrous things created from these blocks. Anyone interested in this committee, see Karen at the meeting to sign up.

EAST SUNRISE QUILT GUILD AUCTION

The auction will be held Saturday, April 12th at 11:00 AM.

For details call Holly Fallace,

954-270-2500

ANNOUNCING

COMFORT BEARS

Got extra fabric (1/4 yard will do)? Pick up the simple pattern at the Orphan Block table and make a comfort bear or two. The Comfort Bears will be distributed to shelters, EMS, fire rescue to be given to children in need.

Earn 25 points for each bear made.



DOWNTON ABBEY PARTY PHOTO ALBUM

Many thanks to Diane Provost, Lee Hasse and Kenny Lunsford for the wonderful planning and execution needed to make the Downton Abbey Party an enjoyable and memorable occasion.



DOWNTON ABBEY PARTY PHOTO ALBUM



DOWNTON ABBEY PARTY PHOTO ALBUM



DOWNTON ABBEY PARTY PHOTO ALBUM

TEA TIME



THE END OF A WONDERFUL PARTY!

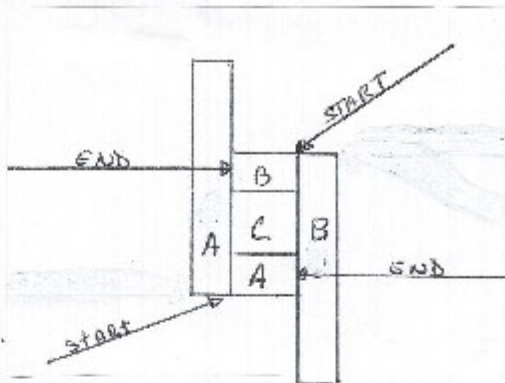
APRIL 2014 BUILD-A-QUILT INSTRUCTIONS: CHIGAI KAKU

Center:

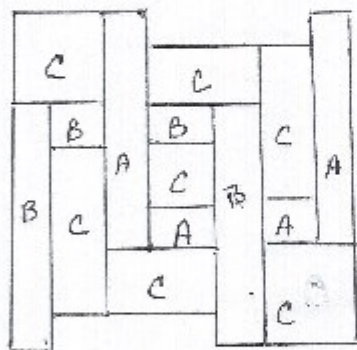
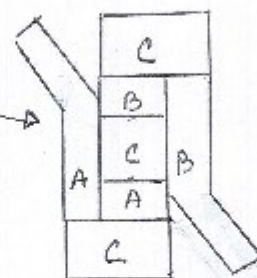
Sew one A and one B $2\frac{1}{2}'' \times 1\frac{1}{2}''$ to opposite sides of the $2\frac{1}{2}''$ square C

Following the diagram, sew a $7'' \times 1\frac{1}{2}''$ A to the center unit BC, refer to "How to Part Seam" and sew as indicated in the diagram.

Repeat on the other side with a $7'' \times 1\frac{1}{2}''$ B. Press.



Pull the long unsewn part of strips A and B away and sew a $3\frac{1}{2}'' \times 2''$ C to the ends of AA and BB, see diagram. Press toward C.



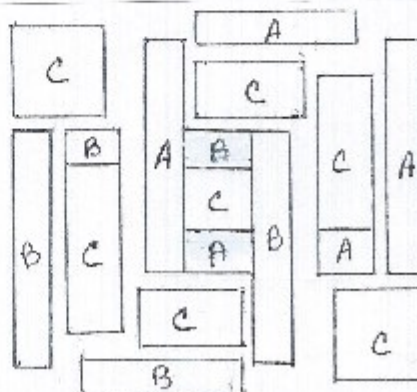
Using the diagram as a guide, join the center to side A and then to side B. Press towards the sides.

Take the 2 remaining A and B $5'' \times 1\frac{1}{2}''$, flip the unsewn pieces and complete the block by sewing all remaining seams. Press.

This block measures $9\frac{1}{2}''$ square

Using different Fat Quarters, make a second block

Happy Piecing!



APRIL 2014 BUILD-A-QUILT INSTRUCTIONS

CHIGAI KAKU (Different Angles)

Inspired by geometric Kamon (family crests)

Choose 3 Fat Quarters, one of each value, Light, Medium and Dark

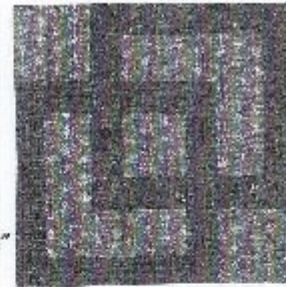
Color A: cut two 7" x 1 1/2" + one 5" x 1 1/2" + one 2 1/2" x 1 1/2" + one 2" x 1 1/2"

Color B: cut same as color A

Color C: cut two 5" x 2" + two 3 1/2" x 2" + two 3" square + one 2 1/2" square

Following the diagram, lay out the pieces close to your sewing machine before you begin sewing. Because this block has several similar pieces, so arranging the block before will help you avoid sewing in the wrong order.

Sew all with 1/4" seam. Sew clean and cut the extra threads as you go.

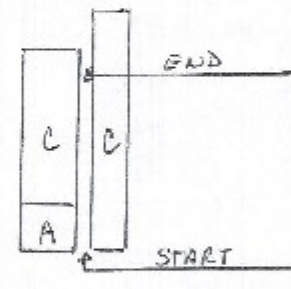


Side units

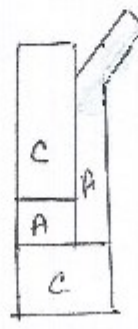
Sew one C 5" x 2" to one A 2" x 1 1/2", press, this is unit #AC1

Sew one C 5" x 2" to one B 2" x 1 1/2", press, this is unit #BC1

Sew one A 7" x 1 1/2" to unit #AC1, refer to "How to Part Seam", sew to about 3/4" from the end of unit #AC1, see diagram, press. Repeat with one B 7" x 1 1/2" to unit #BC1.



See a C 3" square to the end of each units #1, see diagram on page 2 for correct placement



QGBTs LIBRARY



We have wonderful books. Take the opportunity to look through or borrow a book, DVD, or magazine that interests you.

All books must be checked out and returned at the next Guild Meeting. Late fees will be charged when applicable.

Late fees:

DVD's \$3.00 for the 1st month and \$5.00 for each additional month.

Thanks to all who have donated books!

Guild Librarians:

Joan Cohn & Elaine Greenberg

Library Hours: 9:30—10:00 AM during every Guild meeting.

BOOK REVIEW

Angel Antics by Mary Hickey



Here is another old book (1991) that has treasures of beautiful quilts. These quilts look quite complicated with lots of angles and seams. The patterns are well structured, clear, and defined. There are pictures, diagrams and illustrations; all of which are easy to read and understand and use. These quilts appear to be much more difficult to sew than they really are. Looking at all the good information included and the excellent planning by the author, you could make one of these quilts without much difficulty and have a smashing result.

Reviews submitted by Joan Cohn



Hello Fellow Quilters!

I am hosting a retreat in May!!

This Retreat will be a fun time for both modern quilters and traditional quilters to learn about the trends in the modern quilting movement and spend some quality time sewing together. If you want to learn about modern quilting, and have a lot of fun, this retreat is the place for you!

I have attached a flyer that can be printed and distributed at your guild meetings. If you would like some printed flyers, please email me with a regular mailing address and I will mail them to you.

Thanks so much for your support!

Regards, Carole Lyles Shaw
DETAILS OF RETREAT FOLLOW:

Florida Modern Quilt Retreat
www.FloridaModernQuiltRetreat.com

Retreat dates: May 15-18, 2014

Doors Open, Thursday May 15th at 5 p.m. Retreat Ends on Sunday, May 18th at 1 p.m.

Location: Kenilworth Lodge, Sebring FL www.kenilworthlodge.com

REGISTRATION FEE: SINGLE OCCUPANCY -- \$350 per person DOUBLE OCCUPANCY--\$250 PER PERSON

Retreat Schedule:

· **Sew On Your Own available all the time! Workshops are optional. Hand quilters and machine quilters are both welcome.**

· **Thursday, 6 p.m.:**

- o Welcome & Get acquainted activities
- o "What is a Modern Quilt" Lecture
- o Show & Tell
- o Pizza & Salad Dinner (PJ's Optional!)

· **Friday, 9-10 a.m.**—optional Workshop--Modern Quilt Block Design Practice (no-sewing fun!)

· **Friday, 10:15 – 12 noon:** Optional Workshop on Improvisational Piecing

· **Saturday, 9-11:** Optional Workshop on Cutting and Sewing "Slow Curves™" Blocks without templates

· **Sunday 11-12 p.m.**-- Show & Tell and Door Prize Drawings for Fabric Bundles

· Give-Away and Swap Table (for those things you no longer need!)

Quilt Retreat Fee Includes:

- 3 nights at Lodge
- Pizza & Salad dinner on Thursday night
- Continental Breakfast Fri, Sat & Sun
- Coffee, Tea, Fresh Fruit Snacks all 3 days

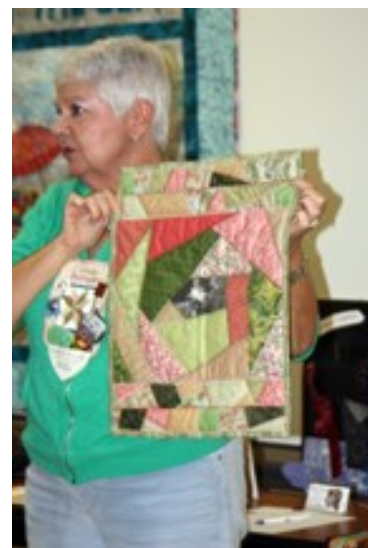
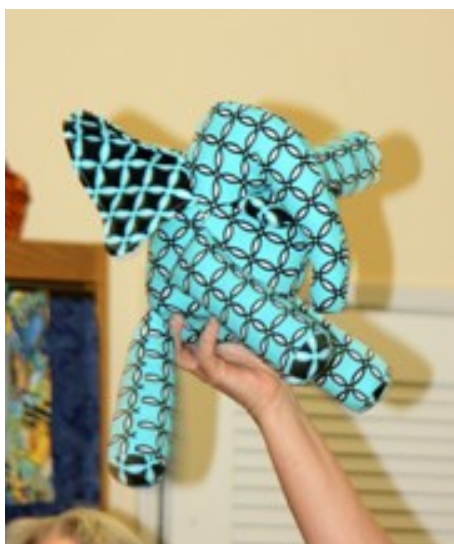


SHOW AND TELL—MARCH 2014





SHOW AND TELL—MARCH 2014





SHOW AND TELL—MARCH 2014

“Downton Abbey Party” Show ‘N Tell

