



# QUILT GUILD BY THE SEA NEWSLETTER

September 2020

VOLUME 10, ISSUE 9

## PRESIDENT'S LETTER - September 2020

Hello Quilters,

Welcome to month 6 of forced seclusion and to month 9 of the weirdest year ever.

I hope you are all fine and getting your UFO's completed. This was the time we have always wanted. I don't know about you, but I find myself not accomplishing as much as I feel I should. How to explain this??? Not sure.

I think, in part, I've taken up some new challenges and so find myself torn in many directions. Working on all...finishing none. I've also noted that I'm watching more and more YouTube videos, going to Facebook quilt store sales and meetups via Zoom. Somehow, the days just fly by, but I still feel we are so very lucky to have our wonderful hobby to see us through.

The Board met this past Tuesday to discuss the future. Since none of us have a crystal ball, we are anticipating that we will be doing Zoom meetings for quite a while. With that in mind, we are starting to schedule 2021 with Zoom ready instructors. Also, the time is coming for elections. There will be several positions open, and we urge you all to start thinking about this now. It's really not good to have the same people year after year. Think about helping out in '21.

In the meantime, for the rest of 2020, we have a terrific lineup of programs for you starting with the Underground Railway Quilts presented by Carole Murphy on Sept. 8th. October will be filled with everything you ever wanted to know about needles. November is still under construction and be on the lookout for our 10th Anniversary celebration in December.

We also have a new way to join our Zoom meetings. We will be doing the invitations via a Registration. This makes it easier for the host to see who's going to be at the meeting ahead of time. More detailed info to follow.

See you all on the 8th  
Rochelle

### **Guild Address:**

Quilt Guild by the Sea  
PO Box 64  
Boca Raton, FL 33429

### **Meeting Place:**

**Zoom until further  
notice**

### **SEPTEMBER IS NATIONAL SEWING MONTH**

#### **Origin of National Sewing Month:**

It is not known who or what organization led the effort to make this a special calendar event; but interest reached the highest office in the land. In 1982 President Ronald Reagan issued a proclamation declaring September as *National Sewing Month*. President Reagan declared it "in recognition of the importance of home sewing to our nation".



**CURRENT OFFICERS:**

**President:**

Rochelle Staiano  
(561- 509-9914)  
[sashakins@hotmail.com](mailto:sashakins@hotmail.com)

**President-Elect:**

Pat Lynes  
909-331-7549  
[pjcreation@aol.com](mailto:pjcreation@aol.com)

**Secretary:**

Marcia Degner  
(561-243-1776)  
[msdegner@gmail.com](mailto:msdegner@gmail.com)

**Treasurer:**

Marie-Christine Leavitt  
561-699-2216  
[mcglquilt@gmail.com](mailto:mcglquilt@gmail.com)

**Membership Director:**

Ellen Heckler  
(561-245-8280)  
[Ellen.Heckler@gmail.com](mailto:Ellen.Heckler@gmail.com)

**Program Director:**

Sheryl Platt  
(561-756-5179)  
[Sherylplatt3@gmail.com](mailto:Sherylplatt3@gmail.com)

**Publication Director:**

Deb Shoemaker  
(954-629-1720)  
[DebShoemaker22@gmail.com](mailto:DebShoemaker22@gmail.com)

**Technology Director**

Ann Ford  
(512-289-0797)  
[ann.k.ford@gmail.com](mailto:ann.k.ford@gmail.com)

**QOV Program Chair:**

Diane Provost  
(561-561-409-3114)  
[paquinprovost@gmail.com](mailto:paquinprovost@gmail.com)

**Outreach Program Chair:**

Linda Eddy  
(561-376-3996)  
[eddylinda1007@yahoo.com](mailto:eddylinda1007@yahoo.com)

**UPCOMING PROGRAM HIGHLIGHTS:**

**September 2020: Underground Railroad**

Presented by Carole Murphy

**October 2020: Schmetz Needles and Trunk Show**

Presented by Rhonda Pierce

**November 2020: The Alluring World of Yokota Quilts**

Presented by Patricia Belyea

**December 2020: QGbtS 10th Anniversary Celebration**

**SHOW 'N TELL—OCTOBER**



**Sharing a "QQ" Show 'N Tell quilt is easy:**

- Take pictures of any entries you wish to submit on your phone.
- There is a limit of 4 quilt submissions.
- Please include your name, the name of your quilt, and your inspiration, if you wish, to the body of the email or text if you would like it included in the newsletter.
- Send your picture(s) to Deb via Email at [debshoemaker22@gmail.com](mailto:debshoemaker22@gmail.com) or text to 954-629-1720.
- The deadline for all pictures is **no later than September 23rd.**

**ANNUAL MEMBERSHIP  
DUES**



**'MEMBERSHIP HAS IT  
PRIVILEGES'**

Paid members of the QGbtS are eligible to:

- participate in Guild programs
- participate in workshops
- receive monthly newsletter
- place ads in the classifieds.
- **Guests are welcome to attend all of our meetings with a donation of \$5.00.**
- Dues are non-refundable.

For further information contact:

Ellen Heckler [561-245-8280](tel:561-245-8280)  
or [quiltguildbythesea2011](mailto:quiltguildbythesea2011@gmail.com)

[@gmail.com](mailto:quiltguildbythesea2011@gmail.com)

**"THE FRANK MCGEE MEMORIAL QOV WORKSHOP"**

**The QOV Workshops**

Due to self-isolation and social distancing, the next date for the QOV Workshop is undetermined. We will notify you when we can restart our program.



*∴ quilt of valor ∴*

**Nominate a Veteran**

Do you know a deserving Veteran that was touched by war? It is time to nominate them. We are hoping to restart our Quilts of Valor awards in 2021 and we have many quilts available right now to present. Reserve one for a family member, a friend, a colleague, a neighbor etc...or tell them how to nominate themselves.

**It's easy to nominate a Veteran in 4 easy steps**

- Sign in to **QOVF.org**
- Click the red rectangle in the center of the page
- Read the Eligibility and Mission of Quilts of Valor
- Click and fill out the form

In the comments area, please write that you wish to have this quilt request going to Quilt Guild by the Sea.

**QVF ON AMAZONSMILE**

**What is AmazonSmile?**

AmazonSmile is a simple and automatic way for you to support your favorite charitable organization every time you shop at no cost to you. When you shop at [smile.amazon.com](https://smile.amazon.com), you'll find the exact same low prices, vast selection, and convenient shopping experience as [Amazon.com](https://amazon.com) with the added bonus that Amazon will donate a portion of the purchase price to your favorite charitable organization. You can choose from over one million organizations to support.

**How do I shop at AmazonSmile?**

To shop at AmazonSmile simply go to [smile.amazon.com](https://smile.amazon.com) from the web browser on your computer or mobile device. You may also want to bookmark [smile.amazon.com](https://smile.amazon.com) to make it even easier to return and start your shopping at AmazonSmile.



## COMFORT QUILTS

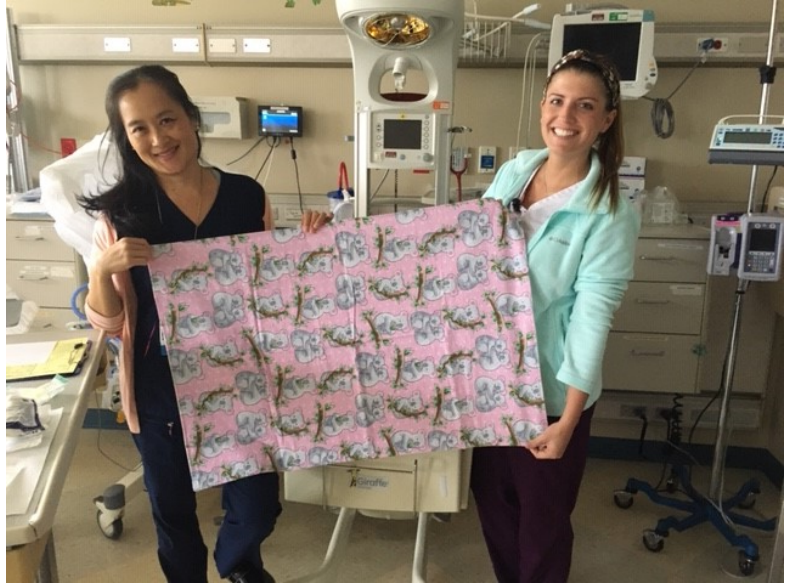
- Due to self-isolation and social distancing, the next date for the Comfort Quilt Workshop is undetermined. We will notify you when we can restart our program.
- Seventy-one (71) Comfort Quilts were delivered this week to BRRH Lynn Cancer Center.
- Approximately thirty (30) more Comfort quilts are ready to go; keep making them ... they will be much appreciated!
- So far this year we have delivered 134 Comfort Quilts to the Lynn Cancer Center, the Boca Raton Regional Hospital Infusion Center, and the Pediatric Trauma Unit at DelRay Medical Center.
- We have completed 173 tops this year, so far! Way to go!!
- Juvenile Comfort Quilts are needed in Trauma Centers. Crib size is suggested.
- Novelty and juvenile fabrics are needed as well as 2 yard measures of fabric for backings.
- Comfort Quilt kits are available. Janet Fredricks will be available to pick up a quilt kit at her house or meet you. Contact her at [954-242-9010](tel:954-242-9010)





**Comfort quilt size specifications are:**

- ◆ a minimum of **38 - 42" wide**, and a minimum of **48 - 54"** in length. If you are using your own backing and batting and are doing your own quilting, feel free to make them wider and/or longer.
- ◆ Quilt tops should be 40" wide so that we can use one width of fabric and do not have to piece the backs.
- QGbtS received a new request for small quilts to cover NICU Isolettes in the Neonatal Unit at Boca Raton Regional Hospital; so far twenty (20) covers were delivered for the NICU. The nurses were so excited and very impressed with the sewing.
- The size of the NICU coverlets quilts is 36" X 36".
- Any questions, contact: Janet Fredricks [954-242-9010](tel:954-242-9010) or email [quilthoney@aol.com](mailto:quilthoney@aol.com) or Wanda Goldfarb [516-592-7575](tel:516-592-7575) or email: [unity777@hotmail.com](mailto:unity777@hotmail.com)







COMFORT QUILTS





### FIDGET QUILTS:

- Due to self-isolation and social distancing, the next date for the Fidget Quilts Workshop is undetermined. We will notify you when we can restart our program.
- The next date for the Fidget Quilts workshop is undecided due to continued isolation. We will notify you when we can restart our workshop.
- The demand for Fidget Quilts is higher than we are able to meet. Think about using a UFO or some unfinished projects and turning them into Fidgets! We have seven Fidgets waiting to be adopted.
- Fidget Quilts are needed for children as well.
- Fidget kits are available. Linda Eddy and Ellen Heckler will be available for you to drop off or pick up a quilt kit at her house or meet you. Contact her at [954-242-9010](tel:954-242-9010) Any questions, please contact Linda Eddy: [561-376-3996](tel:561-376-3996) or email: [eddylinda1007@yahoo.com](mailto:eddylinda1007@yahoo.com)



### COMFORT BEARS:

- Due to self-isolation and social distancing, the next date for the Comfort Bears Workshop is undetermined. We will notify you when we can restart our program.
- Thirty Bears and masks will be placed with Florence Fuller for adoption in October.
- Comfort Bear kits complete with paper pattern, fabric, and ready-to-sew-on bear faces are available. This is a quick and easy project that will make a child smile.  
**Please do not fringe corduroy bears — they shred!!**
- **Pattern and instruction for the Bear and Mask can be found on Page 8-11 and on the QGbtS website.**
- Comfort Bear kits are available. Janet Copen will be available for you to drop off or pick up a quilt kit at her house or meet you. For additional information, contact Janet Copen: 954-632-1181.





**COMFORT BEAR AND CHILD MASK INSTRUCTIONS:**

**MASK:**

- For ages 4-12- You need two pieces of fabric measuring 5"x 7" and 2 pieces of 1/8th" elastic measuring 6" long. If you can't find skinny elastic, you can cut wide ones. If you can't find any elastic, you can use long strings and tie at the back.
- For ages 2-4- You need two pieces of fabric measuring 4"x 6" and 2 pieces of 1/8th" elastic measuring 5" long.
- Pin elastic about 1/2" from corners of short side of front side of one fabric.
- Lay the other piece of the fabric right side facing down and pin all the way around.
- Sew both pieces of fabric together all the way around. It may be hard when you get the corners with the elastic so, go slow. Leave about 2" open so you can turn it inside out.
- Turn inside out. Fold down the opening and top sew closed.
- Make two pleats in the center of sides of mask. The pleats are about 1" each.
- Sew around mask including sides



**BEAR:**

Supplies:

- Fabric—2 pieces 13" x 15"
- Scissors
- Marking Pen or Pencil
- Sewing Machine or Needle and Thread
- Stuffing
- Bear Pattern
- Optional: Template plastic or cardstock to make a reusable pattern, embroidered bear face, floss or thread to add features, ribbon for around his neck.
- We ask that you don't use buttons for eyes or other embellishments that can be a choking hazard).

ALTERNATIVE COMFORT BEAR AND CHILD MASK INSTRUCTIONS:

**FITTED CLOTH MASKS PATTERN INSTRUCTIONS**  
**Small Kid (3-6 years old) - Young (7 to 12 years old)**

**Pattern**

Make a photocopy for each mask size you want of the <http://www.craftpassion.com/?p=26304> paper pattern.

Add ¼ inch seam allowance all around for each mask size.

Glue each paper pattern on file folder board and cut along your new outside line. This stiff pattern will make it easier to trace on the fabric.

**Cutting**

For each mask you will need:

2 fabric pieces for mask front (right and left side)(based on mask pattern size)

2 muslin or fabric pieces for mask back (right and left side) (based on mask pattern size)

Make sure that the fabric pieces are right sides together. If the fabric is directional both pieces go in the same direction, and the right side is up so you don't have the left side of the mask with a flower going up and the right side with a flower going down.

Trace you pattern of each set of fabric.

Add additional ¼ inch on the cheek side near the ear as you will make a single layer fold over hem to slide in an 1/8 inch elastic loop.

Cut along edge of your marking line

**Piecing**

Top of mask - Layer the fabric pieces right sides together. Sew front pieces at the long curved center edge using 1/4" seam. Finger press seam to one side.

Back of mask - Layer the muslin or fabric pieces right sides together. Sew back pieces at the long curved center edge using 1/4" seam. Finger press seam to the opposite side of the fabric pieces you just sewed.

Mask assembly - Place sewn front and back mask pieces together, right sides together "nesting" that center seam (at one edge pin the top seam to the left and the back seam to the right, doing the same at the other end, so you don't sew thru 2 seam allowances, eliminating the bulk). Seam together 1/4" from edge the top and bottom raw edges. Leave the sides open. Turn inside out and press finished piece.

Finishing/Elastic - Finish off both raw edge sides with zigzag. Mark line 1/2" from each end on the raw edge sides. Fold on the line with raw edges toward the muslin side of mask. Sew hem right on edge of zigzag, leaving a 3/8 inch space between fold and seam line, stay stitch start and end of stitching.

Cut 2 pieces of 1/8" elastic 9 ½ inch in length. Pass elastic through hem leaving even tails on each side. Tie both elastic ends together with a loose know leaving a 1" tails. Repeat for the second side. The knots can be retied when the child tries the mask on.

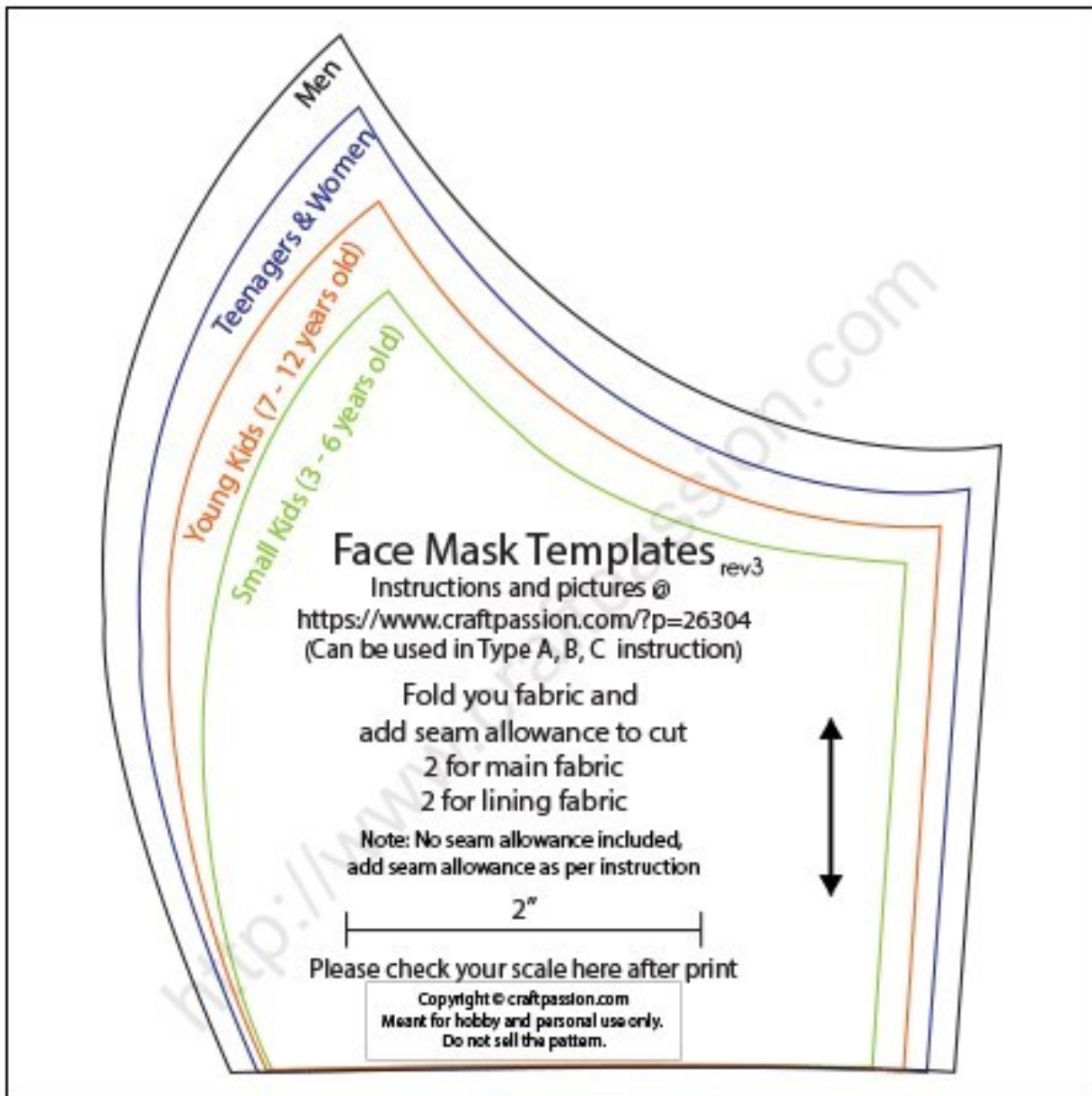
I have made lots in both these sizes and they fit both age groups well and give parents a chance to easily adjust the length of the elastic. Kids love them if you pick cute fabrics with cats, dogs, frogs, bees, etc.....

Enjoy.

Marie Christine

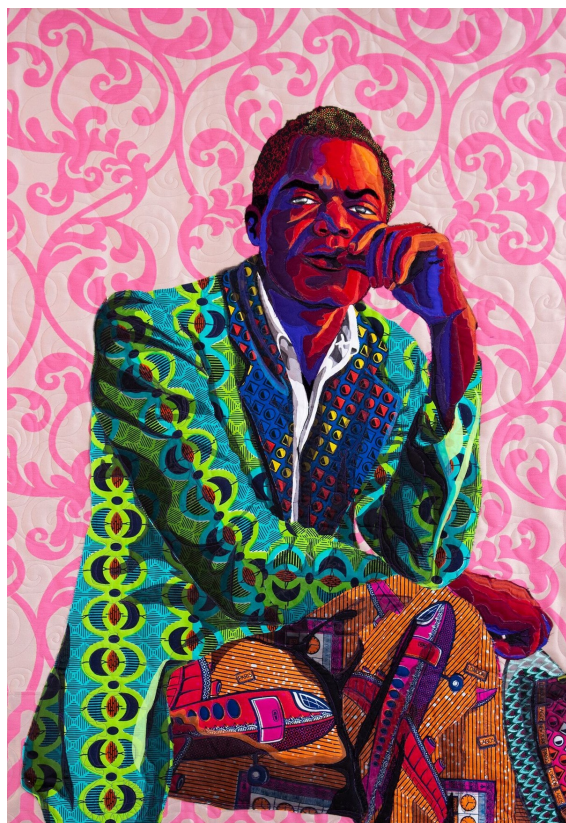
ALTERNATIVE COMFORT BEAR AND CHILD MASK INSTRUCTIONS:

**FITTED CLOTH MASKS PATTERN INSTRUCTIONS**  
Small Kid (3-6 years old) - Young (7 to 12 years old)









## ARTIST BISA BUTLER STITCHES TOGETHER THE AFRICAN AMERICAN EXPERIENCE

Courtesy of Smithsonian Magazine

by Liz Logan

Not much is known about the black man photographed in 1936 in Greensboro, Alabama, by Dorothea Lange, who was on assignment for the Farm Security Administration. He sits, gazing directly at the camera, with his hand at his lips—as if he’s deep in thought—his legs crossed, and his hat in his hand. But when contemporary artist Bisa Butler made a life-sized portrait of this man using fabric and thread, she had a lot to say. She dressed him in vibrant colors and patterns, including a fabric printed with airplanes, to suggest that he’d traveled the world. She imagined him as a writer, poet or philosopher.

Butler uses her unique artistic style, which combines portraiture and quilting, to accord dignity and respect to her black subjects—those she discovers in historical photographs, as well as members of her own family. In the coming months, more and more of the public will have a chance to experience Butler’s work. Originally scheduled to debut earlier this year, her first solo museum exhibition, “Bisa Butler: Portraits,” opens at the Katonah Museum of Art in Katonah, New York, this weekend, and this fall, the exhibition

Butler used this Dorothea Lange photograph as her inspiration for her work *I Am Not Your Negro*.

is scheduled to travel to the famed Art Institute of Chicago, which recently acquired one of Butler’s artworks. That kind of exposure is rare for a contemporary artist making quilts. (Butler was also part of a 2010 satellite exhibition orchestrated by the Smithsonian’s National Museum of African American History and Culture.)

“Her work is, and has always been, about black identity,” says Michele Wije, the curator of the Katonah Museum exhibition, who now works at the American Federation of Arts. “So, the work is very relevant to this moment in history, when we are seeing a societal reckoning over racial inequity.”

Glenn Adamson, an independent craft scholar, curator and writer, who is not involved in the exhibition, observes, “Butler is elevating the status of her subjects by making portraits, and also elevating quilting—which is an African American craft tradition—by adding portraiture to it.”--

Butler, who is in her 40s and based in New Jersey, didn’t set out to be a quilter. She studied painting at Howard University, and then earned a master’s in art education at Montclair State University, where she took a fiber art class. At the time, around 2001, her grandmother was sick, and she wanted to make something for her. So, she made a quilt, based on a vintage photo of her grandparents on their wedding day. That’s when she began developing her process.



## THE AFRICAN AMERICAN EXPERIENCE (Cont'd)

She enlarges a photograph to life size, and then sketches over it, isolating areas of light and dark. Then, she begins choosing fabrics, layering them and stitching them together with a sewing machine, a process called appliqué. At the end, the stitched portrait is layered on top of soft batting and a backing fabric. A repeated pattern of stitches is applied to all three layers to hold them together—thus completing the quilt. One quilt can take hundreds of hours to complete.



Bisa Butler, *Les Sapeurs*, 2018. Cotton and silk 42 x 60 in. (Collection of Claire Oliver and Ian Rubinstein)

Butler's quilts explode with color, and every fabric has a specific meaning. "I use West African wax printed fabric, kente cloth and Dutch wax prints to communicate that my figures are of African descent and have a long, rich history behind them," Butler says. She never uses natural skin tones. "I choose bright technicolor cloth to represent our skin, because these colors are how African Americans refer to our complexions," she adds.

At Howard, Butler was mentored members of the African Commune of Bad Relevant Artists (AfriCOBRA), which sought to define a black art aesthetic that represents African Americans in a positive light. "My color scheme is very much in line with AfriCOBRA," Butler says. "Some people call it the Kool-Aid colors. I didn't set out to adopt those ideas, but I guess the indoctrination worked."

Butler worked for more than a decade as a high school art teacher, quilting at night, on weekends and over the summer. She exhibited wherever she could—in churches, community centers and the like. "Back then, my quilts weren't life-sized, because I didn't have enough time for that," she recalls. "I knew I could tell more of a story with the full body, and multiple people. I always wanted to do more."



## THE AFRICAN AMERICAN EXPERIENCE (Cont'd)



Bisa Butler, *Broom Jumpers*, 2019. Cotton, silk, wool, and velvet. 98 x 58 in. (Mount Holyoke College Art Museum South Hadley, Massachusetts )



Bisa Butler, *The Equestrian*, 2019. Cotton, wool and silk, quilted and appliquéd. 68 x 43 in. (Courtesy of the Love, Luck & Faith Foundation)

A few years ago, she found representation with Claire Oliver Gallery in Harlem. “I had to start thinking about what I wanted to say to the world, and I decided I couldn’t just work from family photos,” she says. So she turned to a database of Depression-era photos—by Lange, Russell Lee and others—from the Farm Security Administration in the National Archives. The photos weren’t under copyright. When she searched “Negro,” she got 40,000 results.

“I like working from black-and-white photos,” she says, “because it gives me the freedom to put in the colors I feel belong there.” She conducts research about the time period and tries to find out everything she can about her subjects. But, in the end, she uses her imagination to fill in the details.

The title of the quilt depicting the unnamed Alabaman is *I Am Not Your Negro*, taken from the 2016 documentary about the author James Baldwin and racism in America. She says the title reflects that man she has invented: “I am a black man, an African American man, and I am not ‘your’ Negro. I am not an intellectual inferior to anyone.”

Another quilt is based on a 1941 photograph taken by Russell Lee, of three women chatting outside a church on



## THE AFRICAN AMERICAN EXPERIENCE (Cont'd)

Chicago's South Side. Butler's ecstatic colors and patterns emphasize the fact that these women were part of a thriving Black middle class. Her title, "The Tea," refers to the black vernacular for gossip.

Butler's mother is from New Orleans, and her father was born in Ghana. She sees herself as part of the African American quilting tradition, but she hopes that she's taking that tradition into the future. Before the Civil War, some enslaved black women learned sewing, spinning, weaving and quilting in wealthy households, and some became highly skilled. After the war, these women began making quilts for everyday use, typically using scraps of fabric, and they passed down their skills to their descendants. One such quilter was Harriet Powers, whose quilt depicting Bible stories, made around 1885, is in the Smithsonian's National Museum of American History. Certain characteristics came to be associated with African American quilts made in the rural South: Improvisation; asymmetry; large-scale patterns; and bold, contrasting colors. In recent decades, a group of African American quilters from the remote, rural town of Gee's Bend, Alabama, became famous for their work in this style.

Butler is adding something radically new to that tradition: portraiture. She's among a group of contemporary black artists—Kehinde Wiley, Amy Sherald, to name a couple—who have adopted the portrait, historically reserved for European aristocrats, to tell the story of contemporary black identity. At the same time, "quilting has also become a very important material and reference point for contemporary African American artists," observes Adamson. He cites the artist Sanford Biggers, who cuts up antique quilts and put them in his paintings. Butler names Wiley and Sherald, along with Faith Ringgold and Romare Bearden, as artists who have influenced her.

Her portraits confront the viewer directly. Wije observes, "It's very unusual in portraits for the subject to be depicted head-on. It's hard to get features right. It gives these works the effect of Byzantine icons, really. And, as the viewer, you're forced to look the person in the eye."

Butler says of her portraits of young black boys in particular: "When people look at my work, I want them to learn something. If you're not black, and young black boys on the street make you feel nervous, I hope that it clicks, that this person is human, he has a soul, he has wants and dreams and wishes. I try to put all that in the gaze itself and the pose. So that people will be confronted with someone who is so human you must see them as an equal."

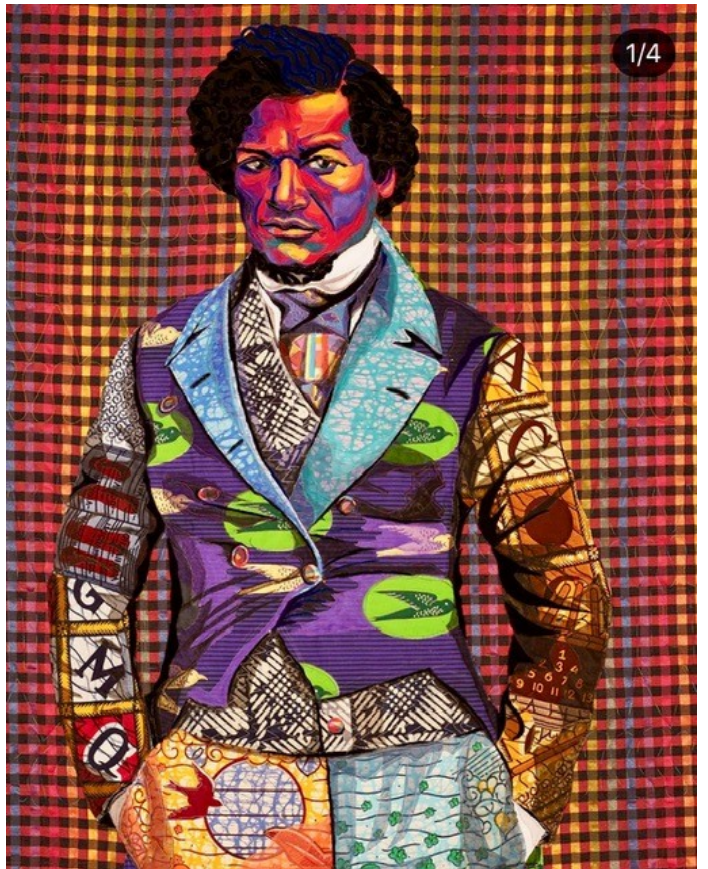
Since the killing of George Floyd, Butler has seen increased interest in her work. "My subjects stand in defiance against racist stereotypes," she says. "My work proclaims that black people should be seen, regarded and treated as equals."



Bisa Butler, *The Princess*, 2018. Cotton, chiffon, lace and satin. 70 x 46 in. (Collection of Bob and Jane Clark)

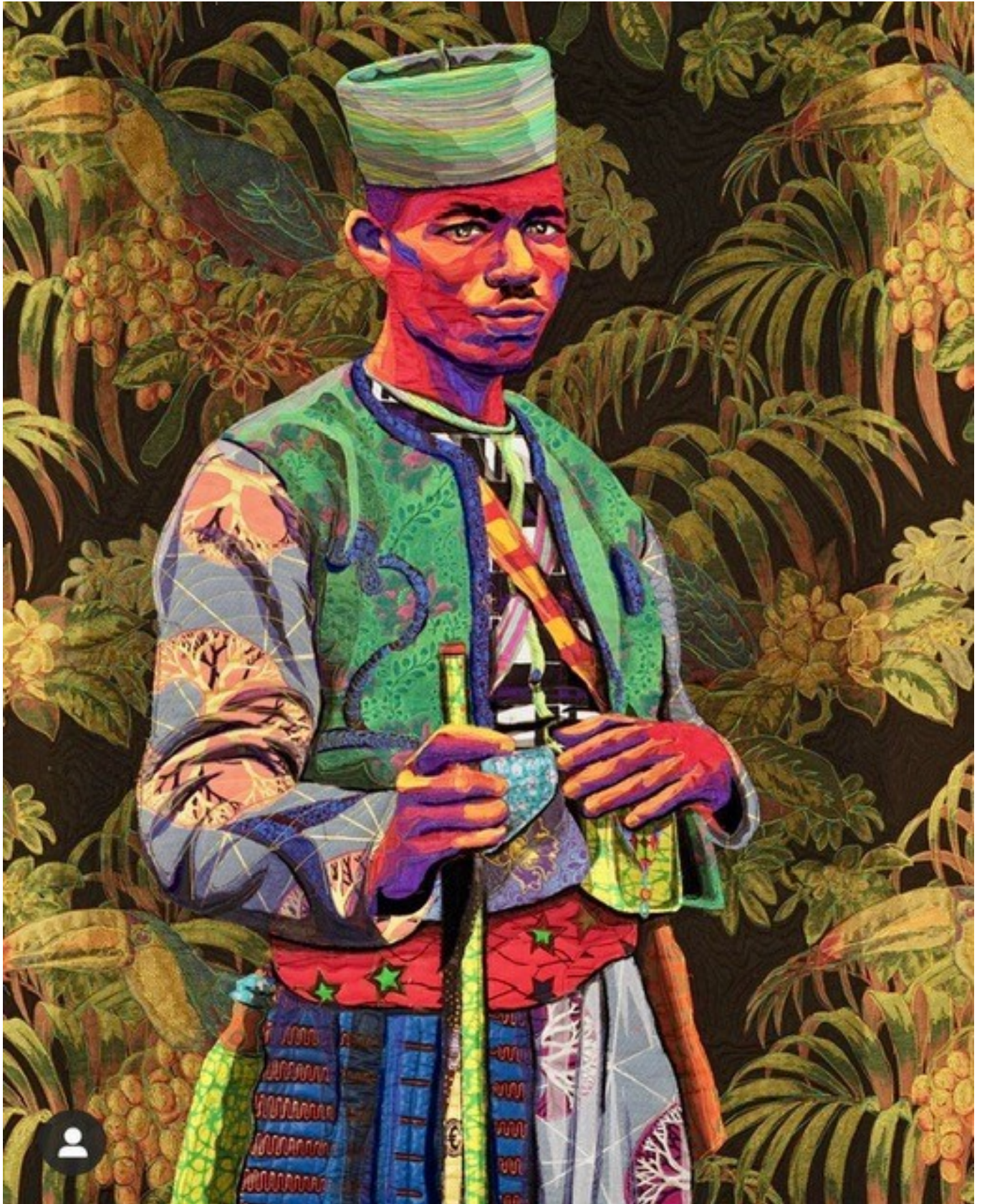


ADDITIONAL QUILTS BY BISA BUTLER





ADDITIONAL QUILTS BY BISA BUTLER





# Quilt Blocks Go Wild!

By Stephen Sherr and Eleanor Levie

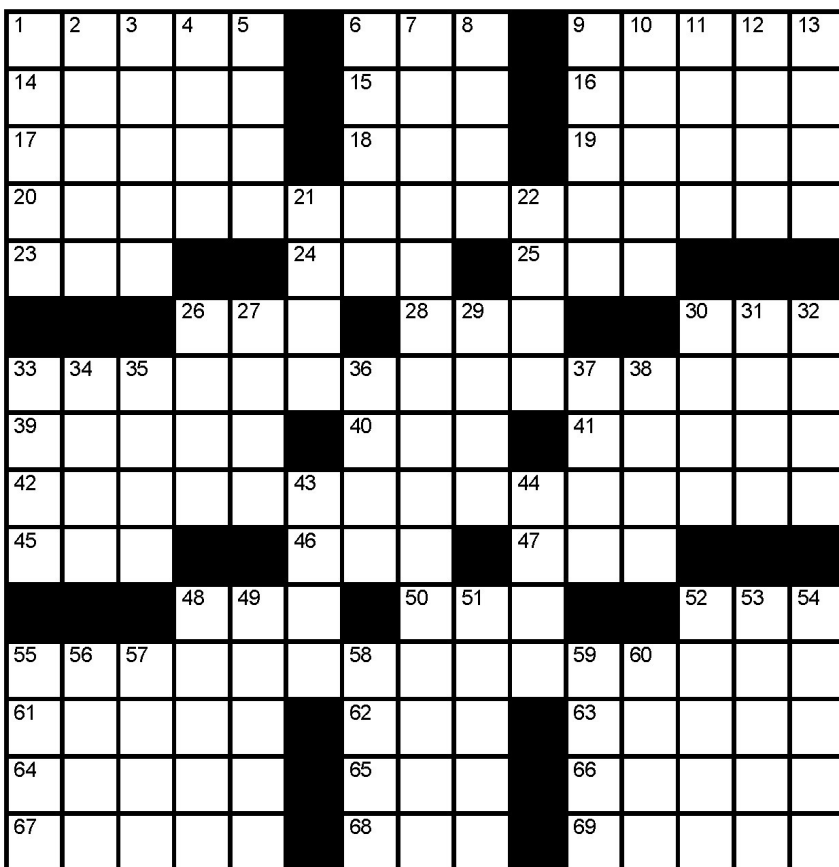
EleanorLevie.com

## Across

1. A Skinny Quilt makes a great dresser \_\_\_\_
6. Lettering on a child's quilt
9. Ingredient for a motley, homey bed cover
14. Profile piece in jewelry that may put a good face on appliqué
15. Court
16. Seminole of Florida
17. Top layer of a quilt sandwich
18. Quilting is an \_\_\_\_ (with 5 Down)
19. Assigner of stars
20. A daring color combo of 6 triangle squares and 3 diagonal squares?
23. At least one
24. Western Native Americans who specialize in ceremonial beadwork
25. Numbered hwy.
26. Birds in the \_\_\_\_
28. \_\_\_\_ Grande Valley Quilt Guild
30. Mama bear, in Madrid
33. Classic to build online?
39. Dyebath measure, in England
40. Handmade doll with red yarn hair
41. Results of stitching without a break
42. Quilt block with explosive rays, against a background of multicolor pastels?
45. Result of a choppy SEA
46. Dog doc
47. Rx providers
48. Repro fabrics patterns are often Civil War \_\_\_\_
50. With corners, it's \_\_\_\_ to be square
52. Good way to obtain quilting info
55. What appliqué's little darling eats in Tokyo?
61. Caribbean cruise stop
62. And so on
63. Pieced, pointed section of an Empire Beauty block
64. Walked into shallow water
65. Frustrated cry after discovering you've hand-stitched through to your pants!
66. Understandable vice when you want to add to your already overflowing stash
67. Kids' mode of winter transportation
68. Fussy-cut patches for an I-\_\_\_\_ quilt
69. Level at which newbies start quilting

## Down

1. Another hobby to dive into
2. After adhering that tiny piece, put the gluestick \_\_\_\_ (2 words)



3. A way to really stuff that trapunto
4. Strand used in basketry
5. See 18 Across
6. Anticipate
7. Adding bands around the completed center
8. In latex, they help you grip the needle; in leather, they are thimbles
9. Walk proudly in a quilted wearable
10. Redwork, Stained Glass, or Celtic
11. Adding glitz is puttin' on the \_\_\_\_
12. Eve's gentler son
13. Noel character who leaves gifts in shoes
21. Illusive halo effect which can result from Radiant Star pattern
22. Possibly ends with ability
26. Culture starter
27. Frosts
29. Country quilting retreat locales
30. Evening Star point count in Mexico
31. Draft a wonky block
32. Nat'l. quilting org.
33. Indigo or denim
34. Slide thread through these, so it enters a needle's eye more easily
35. Another Spanish word
36. Ripping out is the \_\_\_\_ of my existence
37. What quiltsapes depict
38. Obsessions over piecing perfection?
43. A terrible czar
44. Diamond refs.
48. Flowed partner
49. Rocky and To California
51. How wool quilts feel, to some
52. To date
53. Chiffon or organdy
54. Recipient of a security blanket
55. Quilt patterns Buzz and Jig
56. River to the Caspian
57. Fabric color for portrait quilts skin tones
58. Possessions of Homer's neighbor
59. Encourage
60. Reap what you sew?



Created by Linda Roraff—Paper pieced wall hanging;  
42" X 42'



Machine pieced and hand quilted by Linda Roraff



SHOW 'N TELL—AUGUST



Created by Linda Roraff,  
Variation of a Log Cabin

Machine quilted by Debbie  
Bunch

Birthday gift for my  
sister's 65th birthday



Snowman Saddle Pad  
designed and quilted by Deb  
Shoemaker

Birthday gift for my daughter  
so she can use it during the  
month of December



SHOW 'N TELL—AUGUST



Created and quilted by Deb Shoemaker. Another UFO using a panel. Finished for a Christmas gift.



This is "Le Arti des Chat", part of the Garden Patch Collection. This is the 1st machine applique block of a 26 block quilt by Deb Shoemaker



Designed by Lauren Shoemaker, titled "A Hand Study". Created from a drawing, printing on fabric, and fusible and machine applique by Deb Shoemaker. Another Christmas gift for Lauren!

**HOLIDAYS IN SEPTEMBER:**



- September 1:** Emma M. Nutt Day (first switchboard operator)
- September 3:** Skyscraper Day
- September 5:** Be Late for Something Day
- September 6:** Fight Procrastination Day
- September 7:** Labor Day
- September 10:** Sewing Machine Day
- September 11:** Grandparent's Day
- September 14:** International Crab Fest Day
- September 18:** Rosh Hashanah
- September 19:** Oktoberfest
- September 22:** Business Women's Day
- September 25:** Native American Day
- September 26:** International Rabbit Day
- September 28:** National Good Neighbor Day







•THE GREAT•  
WISCONSIN  
QUILT  
SHOW

 PBS Wisconsin  NANCY ZIEMAN  
Quilt-Creations PRODUCTIONS

## Sept. 10-12 A New Virtual Experience!

In response to COVID-19, The Great Wisconsin Quilt Show 2020 will be an online-exclusive experience. We'll miss seeing you in person; we can't wait to connect virtually this September! Visit the website for details.

[QuiltShow.com](http://QuiltShow.com)

### CLASSIFIED



*Cynthia's  
Fine Fabrics*  
Where creativity & fashion come to life!

8126 N University Dr, Tamarac, FL 33321 • 954.724.2900  
[CynthiasFineFabrics.com](http://CynthiasFineFabrics.com) • [Cynthia@CynthiasFineFabrics.com](mailto:Cynthia@CynthiasFineFabrics.com)

 baby lock  Koala Studios  accuquilt  PFAFF  
FOR THE LOVE OF SEWING Perfection starts here.™





**CLASSIFIED**



**THE INSPIRED Sewist**

**Lori A. Fitzgerald**  
Owner/Operator

(561) 747-0525  
lori@theinspiredsewist.com  
theinspiredsewist.com

BERNINA Dealer & Koala Sewing Studio Dealer

661 Maplewood Drive, Suite 14  
Jupiter, Florida 33458



**Quilt a Bit**

Quality Cotton, Beautiful Batiks, and Wool  
Fat Quarters, Kits, Patterns, Books, and Notions  
Longarm Quilting Service Available  
Classes in our New Larger Classroom  
Monday - Friday 9 - 5 pm      Saturday 9 - 4 pm  
2914 Jog Road, Greenacres, FL. 33467    (561) 304-7211  
Northeast corner of 10th Avenue and Jog Road in Barclay Square Plaza  
www.quiltabit.com    quiltabit@facebook.com



Laura & Dave Jordan

Brother • Miele  
Babylock

**Laura's Sewing & Fabric**  
Sewing Machines • Fabrics • Supplies  
Sales & Service • Classes

www.sewwithlaura.com • laurassewing@bellsouth.net

3966 Northlake Blvd.      1707 N.W. St. Lucie West Blvd., #102  
Palm Beach Gardens, FL 33403      Port Saint Lucie, FL 34986  
**561-799-5228**      **772-344-5229**



**CLASSIFIED**

**CUSTOM LONGARM QUILTING**

---

**DOTTY LEVINE**  
10351 SUNSET BEND DR.  
BOCA RATON, FL 33428  
H. 561.470.6219  
C. 561.756.1090  
dottylevine82@yahoo.com



**StitchCraft**  
quilt • sew • stitch

**VISIT OUR  
NEW  
LOCATION!**

141 NW 20th ST, Suite D2, Boca Raton, FL 33431  
info@stitchcraft.com (561) 447-4147 www.stitchcraft.com  
Open Mon - Sat 10 - 5



**Linda Adamcik  
Quilting Queen Inc.  
Long Arm Quilting Services  
561-310-1363  
QuiltingQueen@att.net**



QUILT BLOCKS GO WILD SOLUTION

S	C	A	R	F		A	B	C		S	C	R	A	P
C	A	M	E	O		W	O	O		T	R	I	B	E
U	P	P	E	R		A	R	T		R	A	T	E	R
B	O	L	D	M	A	I	D	S	P	U	Z	Z	L	E
A	N	Y			U	T	E		R	T	E			
			A	I	R		R	I	O			O	S	A
B	L	O	G	C	A	B	I	N	B	L	O	C	K	S
L	I	T	R	E		A	N	N		A	C	H	E	S
U	P	R	I	S	I	N	G	S	U	N	D	O	W	N
E	S	A			V	E	T		M	D	S			
			E	R	A		H	I	P			A	S	K
S	U	N	B	O	N	N	E	T	S	U	E	S	H	I
A	R	U	B	A		E	T	C		R	A	Y	E	D
W	A	D	E	D		D	O	H		G	R	E	E	D
S	L	E	D	S		S	P	Y		E	N	T	R	Y